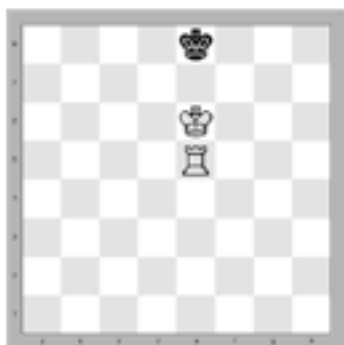


WaddleWaddle

Teacher's Page



Any first move with White's rook works!

White	Black
1. Re1	Kf8
2. Rg1	Ke8
3. Rg8 mate	(just one example)

White mates in 3 Any king move and White **cannot** mate in 3!

NudgeNudge

Amateur White	Kahn Black
1. e4	e5
2. Nf3	Nc6
3. Nc3	Nf6
4. d4	ed
5. Nxd4	Bb4 ¹
6. Nxc6	bxc6
7. Bd3	O-O ²
8. O-O	d5
9. e5	Ng4
10. f4	Qh4
11. h3	Bc5+
12. Kh1	Qg3 ³
13. hxg4	Qh5 mate

Of course, sometimes it **does** take a check to nudge the enemy King into a mating net.

White tries an line that leads back to a Center Counter Game where White often brings his Queen out too early.

Here White delays the Queen move, but he still winds up a move behind in development.

¹ **5. ...Bc5** is often suggested by my students. It might have made Black's attack even stronger.

² You can tell how far Black is ahead when he castles first.

³ Look, there's a hole for the Queen to threaten mate on **h3**!

David Donaldson teaches Chess

Source: Game #168,
1000 Best Short Games of Chess,
Irving Chernev, Simon & Shuster

chess@davidDonaldson.com
source:davidDonaldson.com/pdfs/